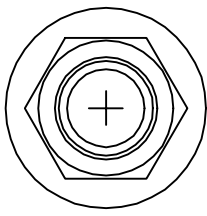
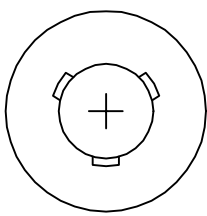
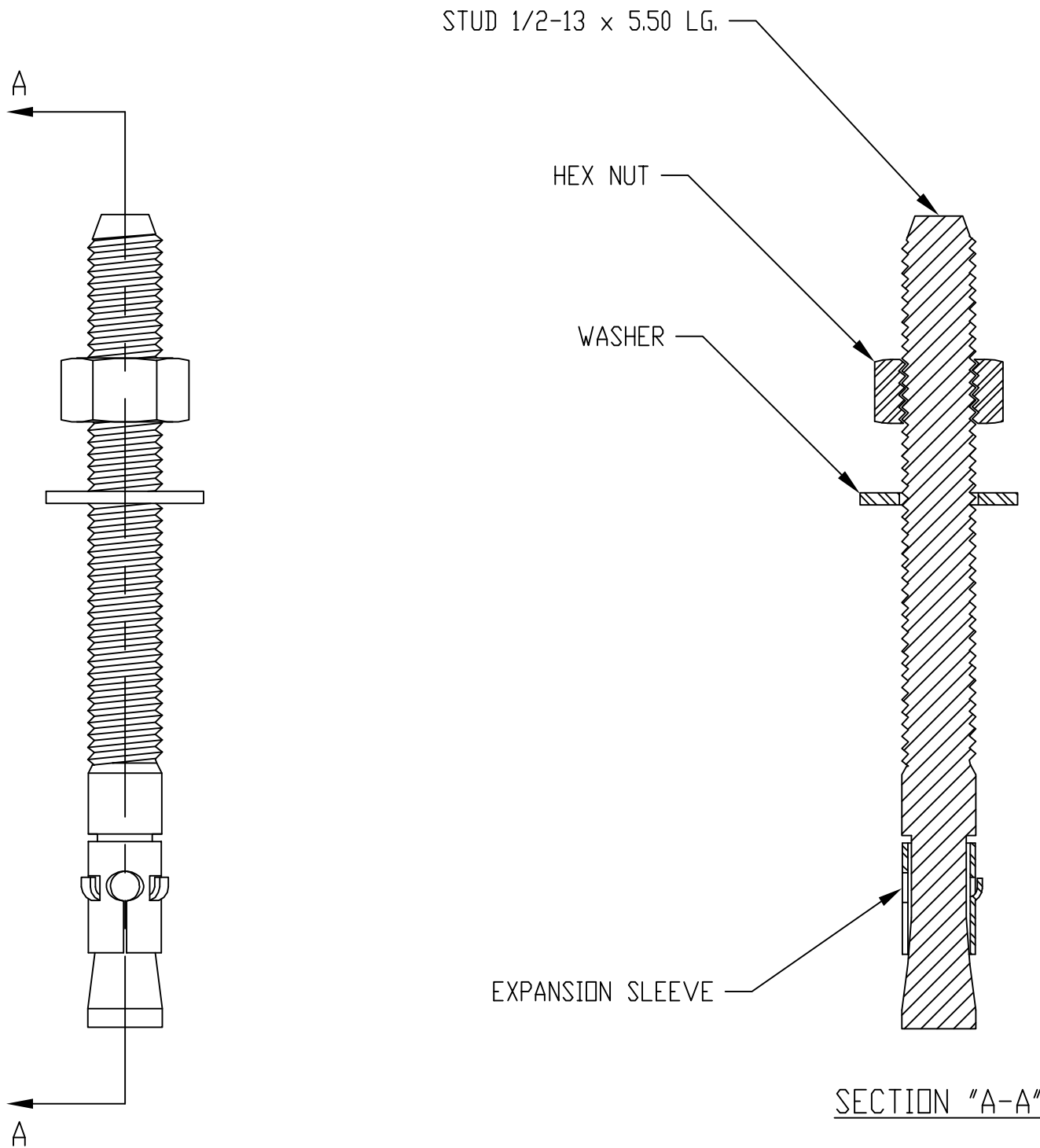


PART NAME	SEISMIC ANCHOR KIT	PART No.	AK-8850	REV. DATE	8-31-05
-----------	--------------------	----------	---------	-----------	---------



MATERIAL: STEEL  
FINISH: ZINC PLATE



TENSION TEST

CONCRETE STRENGTH: 2,000 psi  
DEPTH OF EMBEDMENT: 2.25 inches min.  
AVERAGE TORQUE OF NUT: 55 ft. lbs.  
AVERAGE PULLOUT: 4,660 lbs.

SHEAR TEST

CONCRETE STRENGTH: 2,000 psi  
DEPTH OF EMBEDMENT: 2.25 inches min.  
AVERAGE TORQUE OF NUT: 55 ft. lbs.  
AVERAGE PULLOUT: 4,760 lbs.

APPROVALS/LISTINGS

MEETS OR EXCEEDS U.S. GOVERNMENT G.S.A. SPECIFICATION FF-S-325 GROUP II,  
TYPE 4, CLASS 1  
UNDERWRITERS LABORATORIES  
FACTORY MUTUAL  
ICBO EVALUATION SERVICE, INC. - #ER-1372 (INCLUDING  
SEISMIC LOADING CONDITIONS)  
METRO-DADE COUNTY - #01-0504.12  
CITY OF LOS ANGELES - #RR2748  
SBCCI COMPLIANCE REPORT - #9570  
CALIFORNIA STATE FIRE MARSHAL  
CAL TRANS

INSTALLATION

0.50" DIA. CARBIDE TIPPED HAMMER DRILL BITS  
ANCHOR DIAMETER EQUALS HOLE DIAMETER